

Maker & Son

FLOOR PLANNING SERVICE UK | 2025





Maker&Son

Our Floor Planning Service

Imagining new Maker&Son furniture in your home is exciting, but planning how to arrange it in an existing space can be hard work. Thankfully, our experts can help you with the best options to make the most of your new furniture.

Our design-conscious team can create variations of your rooms, with different furniture configurations, to help you make the best decision for your home.

This catalogue is designed to show the different levels of detail our design team offer in order to help you with your floor plan. If you would like any assistance with measuring your room, you can download a helpful guide [here](#).

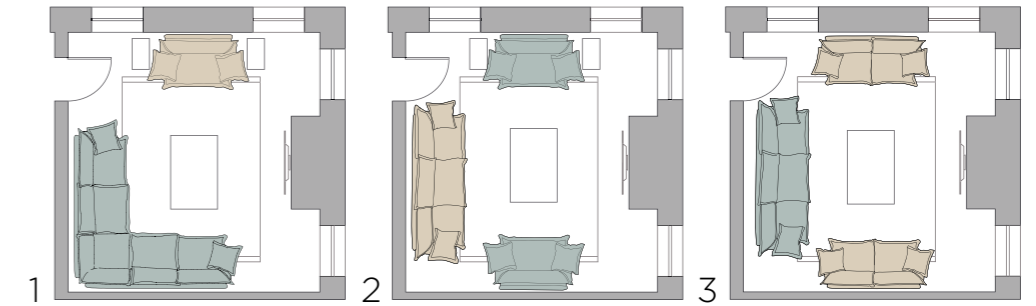
Complimentary Floor Plan - Top View

ARCHITECTURAL ROOM DRAWING

As part of our complimentary services, we can draw your room as an architectural aerial view. This option is ideal for getting a one-dimensional visual understanding of the proportions you have to play with. We can show you multiple examples of how your new Maker&Son furniture would occupy space within the room, in combination with your existing or future components.

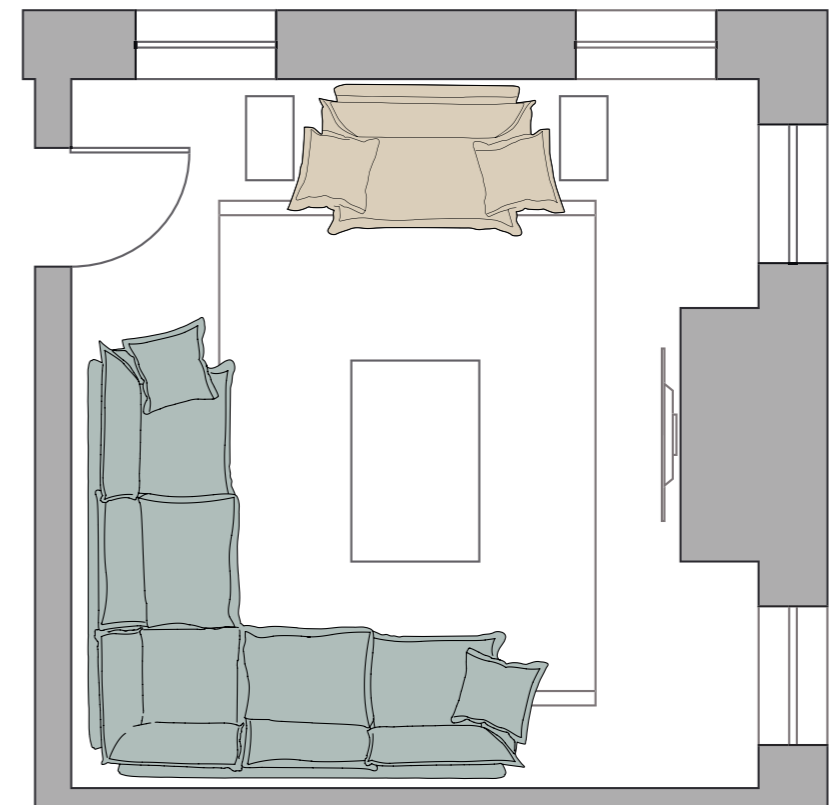
STEP 1

We create up to 3 layout options for you to choose your desired floor plan from.



STEP 2

You choose your favourite and place your order.



ITEM 1

Size: 3x3 Corner Sofa
Range & Pillow Edge: Song, Pillow Edge
Fabric Selection: 100% Italian Linen, Celestine Blue

ITEM 2

Size: Bespoke 1.6m Loveseat
Range & Pillow Edge: Song, Pillow Edge
Fabric Selection: 100% Italian Linen, Sunstone Beige

3D Render Floor Plan - Multi View

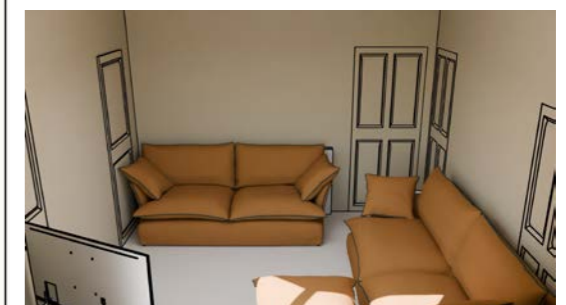
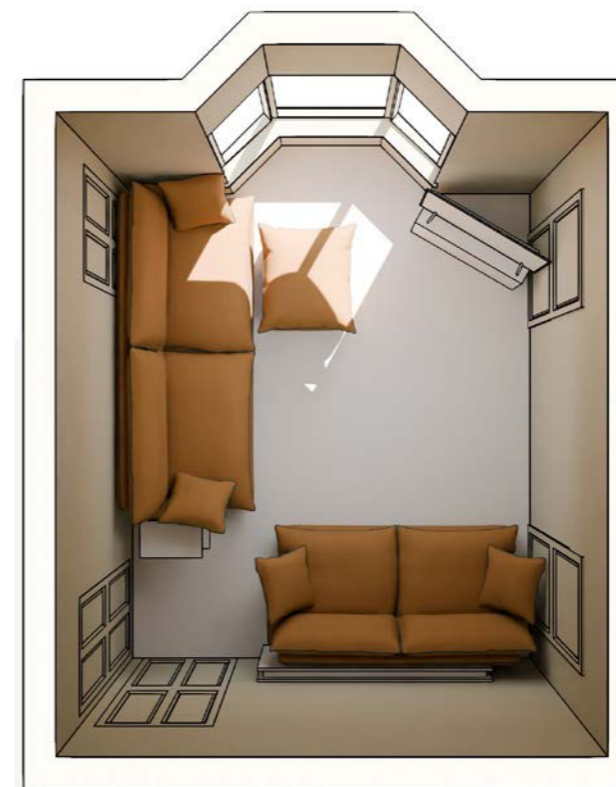
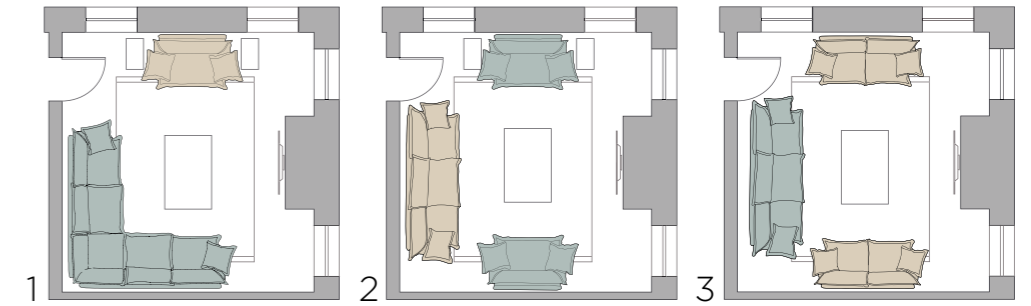
3D ROOM DRAWING

In addition to our free service, we also offer a more detailed 3D option. This is ideal for understanding how your room will look and feel with Maker&Son furniture in place, giving you multiple aspects of the space in a realistic rendering. To begin, our design team will create three furniture configurations that best suit the space and your requirements. Once you have chosen your layout, we will then translate it into a 3D-modelled room with multiple views and angles.

PRICE: £100

STEP 1

We create up to 3 layout options for you to choose your desired floor plan from.



STEP 2

We then create a 3D top view of your room in the chosen floor plan. If you would like to see another view from any additional angles, we can do that as well. We are more than happy to include any important furniture, such as a coffee table or a TV, to ensure everything fits perfectly with your new Maker&Son furniture.

Detailed 3D Render Floor Plan - Multi View

3D ROOM DRAWING WITH ADDITIONAL DETAILS

If you love the idea of our 3D room drawings but would like to see more styling details, we can create a plan that is as comprehensive as you need. This option is ideal for understanding how the room you're designing will look and feel with your new furniture in place, combined with additional components such as wall and floor colours, or if you have chosen a bespoke fabric for your covers. All viewed from multiple aspects of your room, giving you a comprehensive design plan.

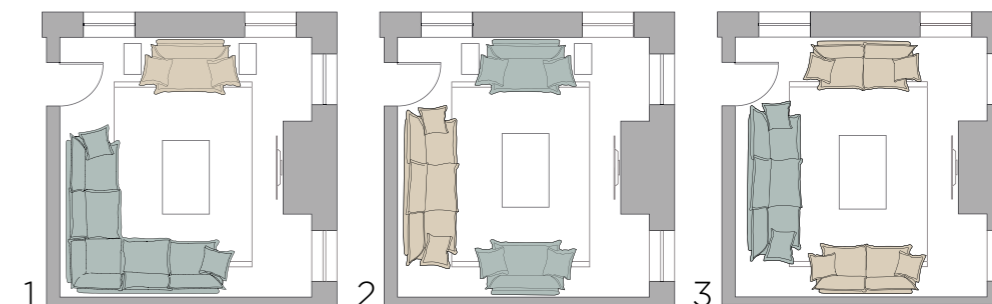
We will need photos and details of wall colours, flooring, curtains and any other furniture, so that we can include them in the floor plan. This is a fantastic way to see your room come to life, especially if you are building a new home or renovating.

Due to the unique nature of every customer's home, the cost for this bespoke service is upon request. Please contact our sales team to find out more.

PRICE: UPON REQUEST

STEP 1

We create up to 3 layout options for you to choose your desired floor plan from.



STEP 2

We create a 3D top view of your room in the chosen floor plan. If you would like to see another view from any additional angles we can do that too. We are more than happy to include any design features you wish to add, including wall colour, curtain, rugs and bespoke fabrics.



MAKERANDSON.COM

HELLO@MAKERANDSON.COM | 08008085408